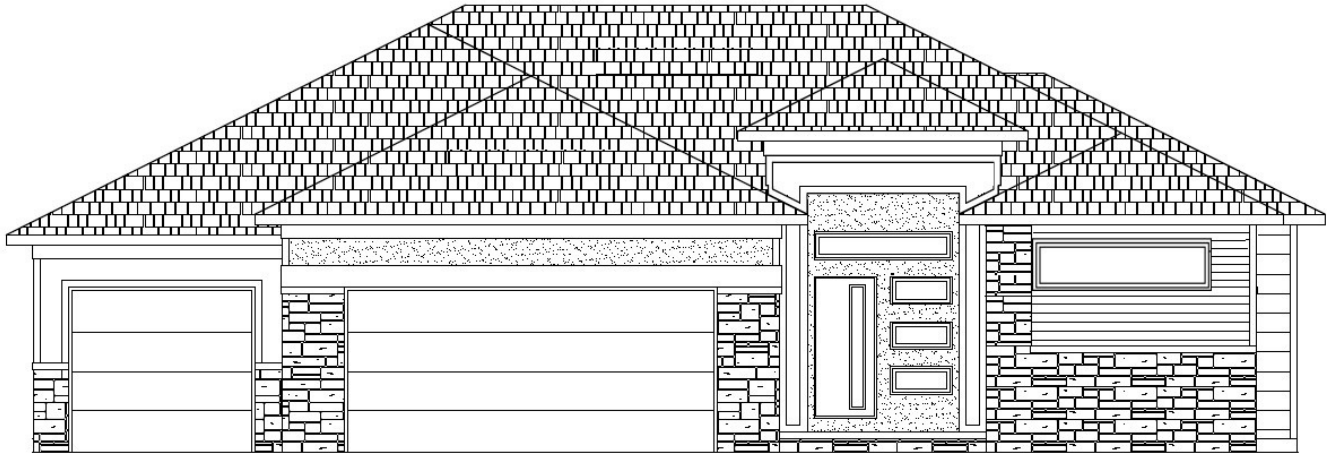


The Scottsdale 1875



11875 SQFT MAIN FLOOR | 1323 SQFT FINISHED IN LOWER LEVEL
3 BEDS | 3 BATHS | OVER SIZED 3 CAR GARAGE

- ✓ GRANITE & QUARTZ COUNTERS W/ MOEN FAUCETS
- ✓ HARDWOOD/TILE/CARPETED FLOORS
- ✓ OPEN CONCEPT- HIDDEN STAIRCASE BEHIND FIREPLACE
- ✓ HUGE WALL OF WINDOWS & 8' X 8' SLIDING DOOR TO A 12' X 20' COVERED CEDAR DECK, PATIO DOWN BELOW W/ WALKOUT
- ✓ MASSIVE ISLAND KITCHEN WITH WALK IN PANTRY
- ✓ TRUE EURO CABINETS WITH SOFT CLOSE HARDWARE
- ✓ 5 BURNER GAS COOK TOP, DISHWASHER, WALL OVEN & BUILT IN MICROWAVE, ROLL OUT DOUBLE TRASH BIN CABINET.
- ✓ FULL TILE WALK IN SHOWER IN MASTER BATH W/ DUAL SEPARATE CONTROL HEADS, SHELF AND GLASS PANEL, DUAL SINK & FLOATING VANITY
- WALK IN CLOSET, VAULTED SMOOTH CEILING, CEILING FAN
- ✓ CEDAR ACCENTS, STONE & HARDIE CEMENT BOARD/LP SMART SIDED EXTERIOR
- ✓ FULL SODDED LOT, LANDSCAPING, & SPRINKLERS INCLUDED

FINISHED LOWER LEVEL WITH FULL WET BAR, FULL BATH & 2 BEDROOMS, FIREPLACE & UNFINISHED STORAGE AREA



Refreshing & Refined Modern Homes

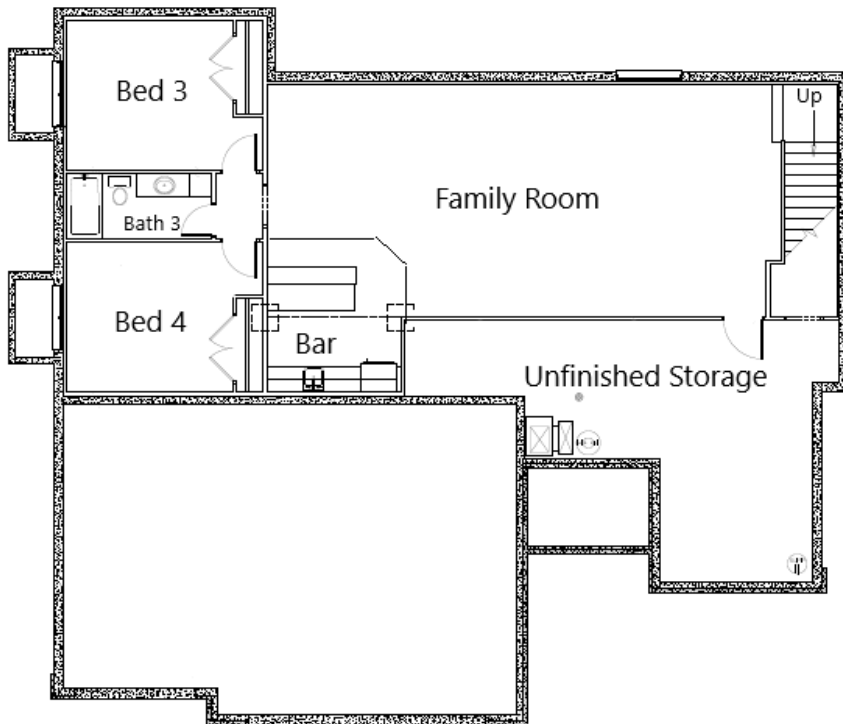
Phone: 402.880.8899
BuildRedwood@outlook.com

www.BuildRedwood.com
fb.me/BuildRedwood

Main Floor



1875 Sqft



Lower Level



1323 Sqft
Finished

FOUNDATION LEVEL



Refreshing & Refined Modern Homes

Phone: 402.880.8899

BuildRedwood@outlook.com

www.BuildRedwood.com

fb.me/BuildRedwood