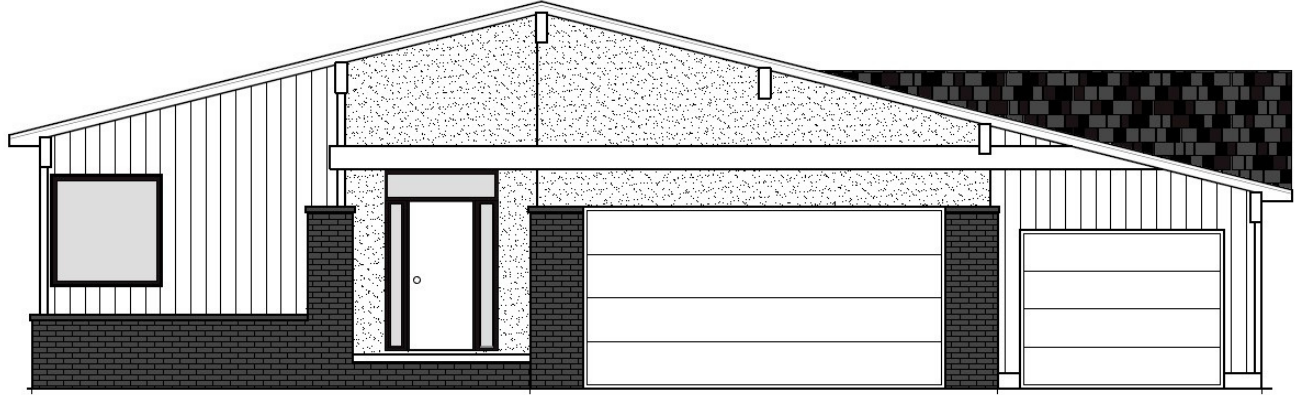


# Retro Joe Ranch



## MODERN, REFINED & INNOVATIVE DESIGN MID-CENTURY MODERN INFLUENCE

1756 SQFT ABOVE GRADE | UNFINISHED LOWER LEVEL  
3 BEDS | 2 BATHS | 3 CAR GARAGE

- ✓ MODERN KITCHEN WITH BREAKFAST LEDGE ISLAND
- ✓ HIDDEN WALK IN PANTRY, SOFT CLOSE, EURO CABINETS
- ✓ LED UNDER & OVER CABINET LIGHTING
- ✓ SMOOTH TOP RANGE, DISHWASHER, MICROWAVE, INCLUDED
- ✓ HIDDEN PULL OUT TRASH/RECYCLE BINS IN ISLAND
- ✓ WOOD LOOK FLOORS THRU MAIN LIVING AREA MAIN FLOOR
- ✓ OPEN CONCEPT WITH HIGH VAULTED CEILING
- ✓ TILE WALK IN SHOWER IN MASTER BATH W/ DUAL SEPARATE CONTROLLED HEADS AND GLASS PANEL
- ✓ DUAL SINK & VANITY, HUGE WALK IN/WALK THRU CLOSET TO LAUNDRY ROOM, VAULTED CEILING, CEILING FAN
- ✓ BLACK BRICK & HARDIE CEMENT BOARD/LP SMART SIDED EXTERIOR
- ✓ FULL SODDED LOT, LANDSCAPING, & SPRINKLERS INCLUDED
- ✓ LOWER LEVEL UNFINISHED BUT FINISH OPTIONS AVAILABLE



Refreshing & Refined Modern Homes

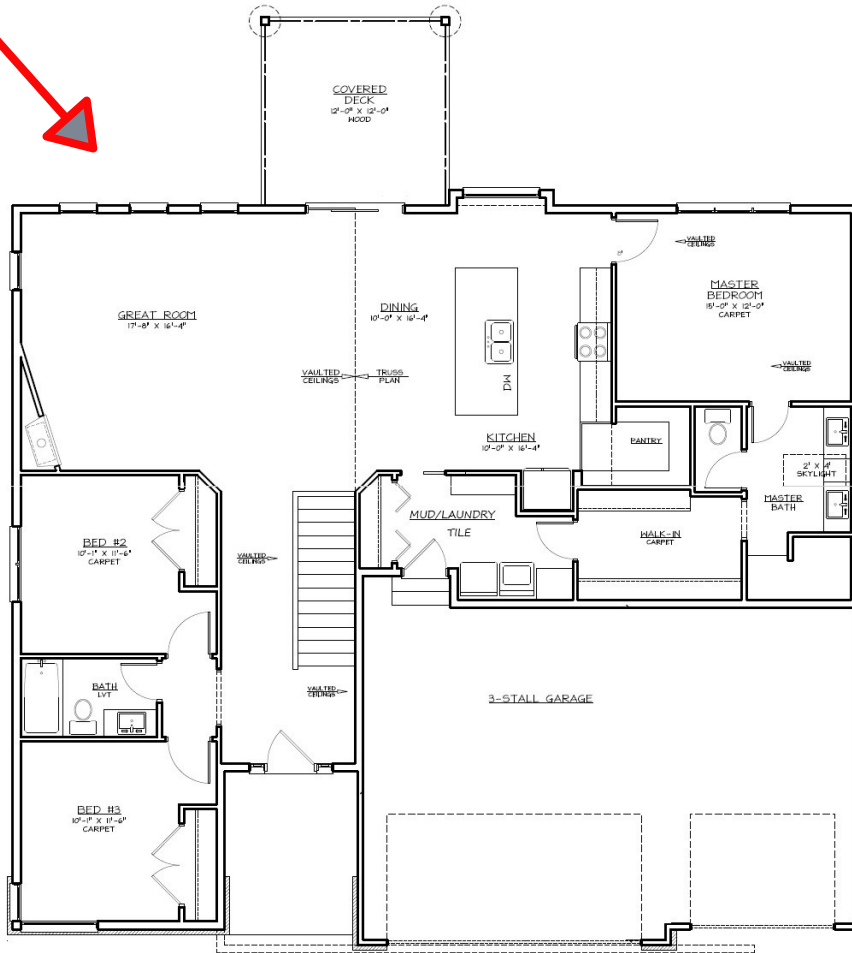
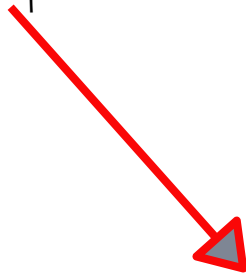
Phone: 402.880.8899

BuildRedwood@outlook.com

[www.BuildRedwood.com](http://www.BuildRedwood.com)

[fb.me/BuildRedwood](https://fb.me/BuildRedwood)

Main  
1756 Sqft



Refreshing & Refined Modern Homes

Phone: 402.880.8899

[www.BuildRedwood.com](http://www.BuildRedwood.com)

[BuildRedwood@outlook.com](mailto:BuildRedwood@outlook.com)

[fb.me/BuildRedwood](https://fb.me/BuildRedwood)